

COLOR CHART:

Color Categories, Coatings and Finishes.

This color chart is a guide of color options for the industrial construction, available in Isocindu's facility, that meet the quality standard for the architectural and industrial demand.



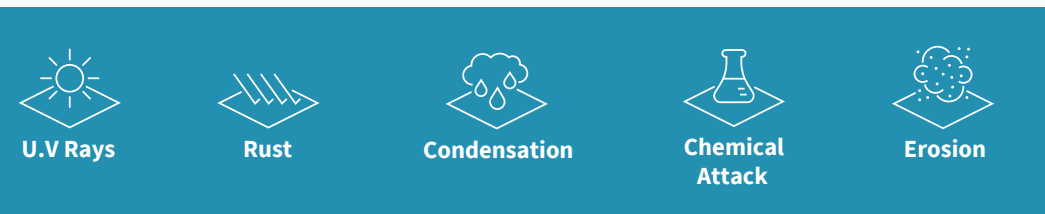
INTERNAL AND EXTERNAL FACES

It is important to consider that the two faces of the panel will be in contact with two significantly different environments.

The external face will be in contact with pollutants in the atmosphere, the sun, and solar spectrum UV rays. In addition, raising the temperature of the external metal face will cause a physical-chemical reaction on the organic coating.

Internal faces will have a temperature significantly lower due to the insulation of the panel. The internal environment, the pollutants of production lines, and chemical agents used in those processes, all need to be considered for the selection of the internal panel face.

A pre-lacquered steel product is composed of a zinc base coat with subsequent primer and finish coats.



CATEGORY 1: POLYESTER STANDARD / USDA

Standard Color Steel

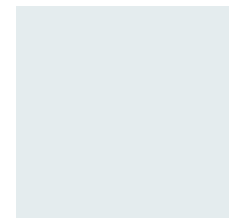


RAL 9002 White Grey
USDA Available

RAL 9010 Pure White
USDA Available

SIMIL RAL 9003 Signal white
USDA Available

Standard Sand
USDA Available



Pyrenean White

Special Color Steel



SIMIL RAL 6028 Pine Green

SIMIL RAL 7016 Anthracite Grey
USDA Available

SIMIL RAL 5010 Genecian Blue
USDA Available

SIMIL RAL 3020 Carmine Red



SIMIL RAL 3009 Oxide Red

Special Blue

SIMIL RAL 9006 Silver Grey
USDA Available

RAL 8004 Copper Brown



Pantone Green

Regio Blue

RAL 2004 Pure Orange

Metalic Grey

CATEGORY 2: KYNAR

All Category 2 can be developed in same colors of Category 1

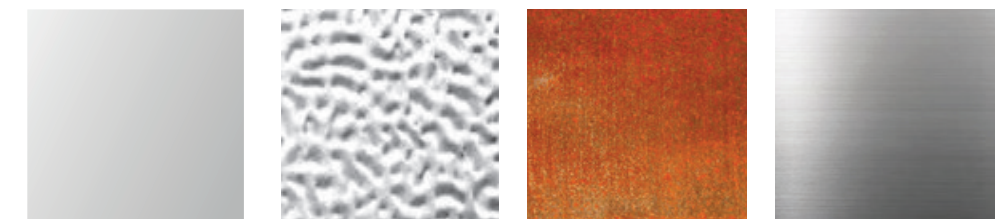


RAL 9010 Pure White
USDA Available

Coatings are durable polyvinylidene systems containing 70% Kynar or Hylar resins, ceramic and other inorganic pigments. This system provides a powerful chemical bond, resistance to ultraviolet radiation with exceptional color retention, chalking resistance, and chemical degradation, 20 years warranty.



CATEGORY 3: SPECIAL COATING OR FINISH



PVC

Gofrado

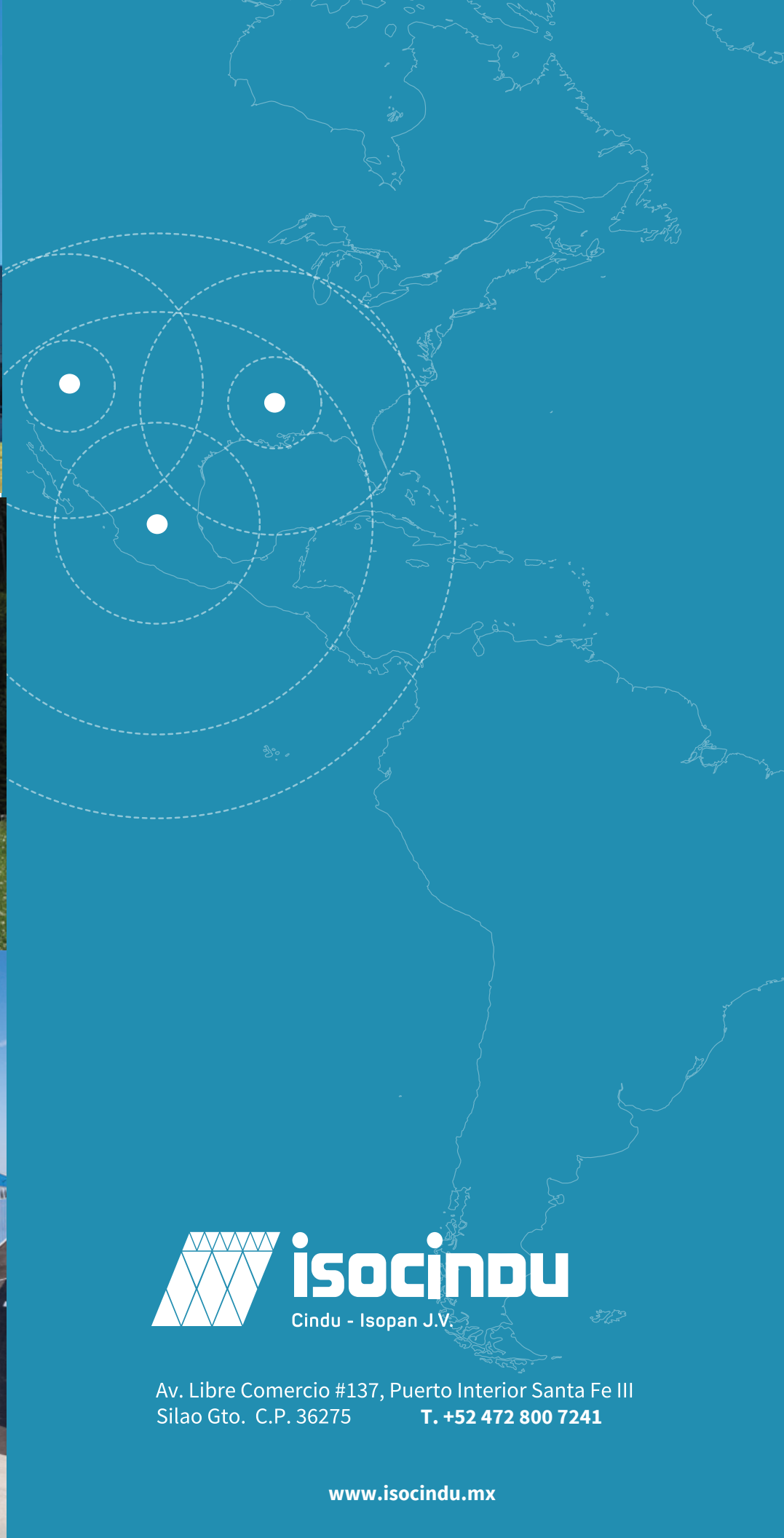
Corten Steel

Stainless Steel (Gauge 26, 24)

IMPORTANT: For stock availability, thickness, supports, non-standard colors and guarantees, contact IsoCindu. Colors may vary depending on the batch of numeric codes that correspond to the most similar RAL code.

*Custom colors will be an up charged / Confirm steel chart last date version. For special guarantees, please refer your commercial agent to fill out the customer environmental questionnaire.

Colours: *Match the original colours within the limitations of printing



 **isocindu**
Cindu - Isopan J.V.



COLOR CHART



 **isocindu**
Cindu - Isopan J.V.

Av. Libre Comercio #137, Puerto Interior Santa Fe III
Silao Gto. C.P. 36275 T. +52 472 800 7241

www.isocindu.mx